

Designervilla in the first line of the sea in Cala Moli



Price: 4.300.000 €

GENERAL INFORMATION

Property Ref:	CW-PAB-42	Category:	Villas, Luxury Houses
Location:	Cala Moli	Area:	Cala Moli
N. Bedroom:	7	N. Bathroom:	5
M ² Property:	1500	M ² Inside:	400



This property is not for sale until the energy certificate has not been submitted.

DESCRIPTION

Designervilla in the first line of the sea in Cala Moli and existing conversion project

This fantastic modern villa is located first line on the west coast of Ibiza with a breathtaking panoramic sea view, including magnificent sunsets throughout the year.

The exceptional design is due to the architect Ricardo Bofill, visible in the choice of materials of modern building elements such as glass and steel, combined with a more classical architectural style using elements such as pillars, arches and ornaments, which are connected by clean, clear

lines Giving it a futuristic appearance.

Another highlight of this villa is its own sea access.

The popular bays Cala Moli, Cala Conte and Cala Bassa of the west coast are reachable in a few minutes.

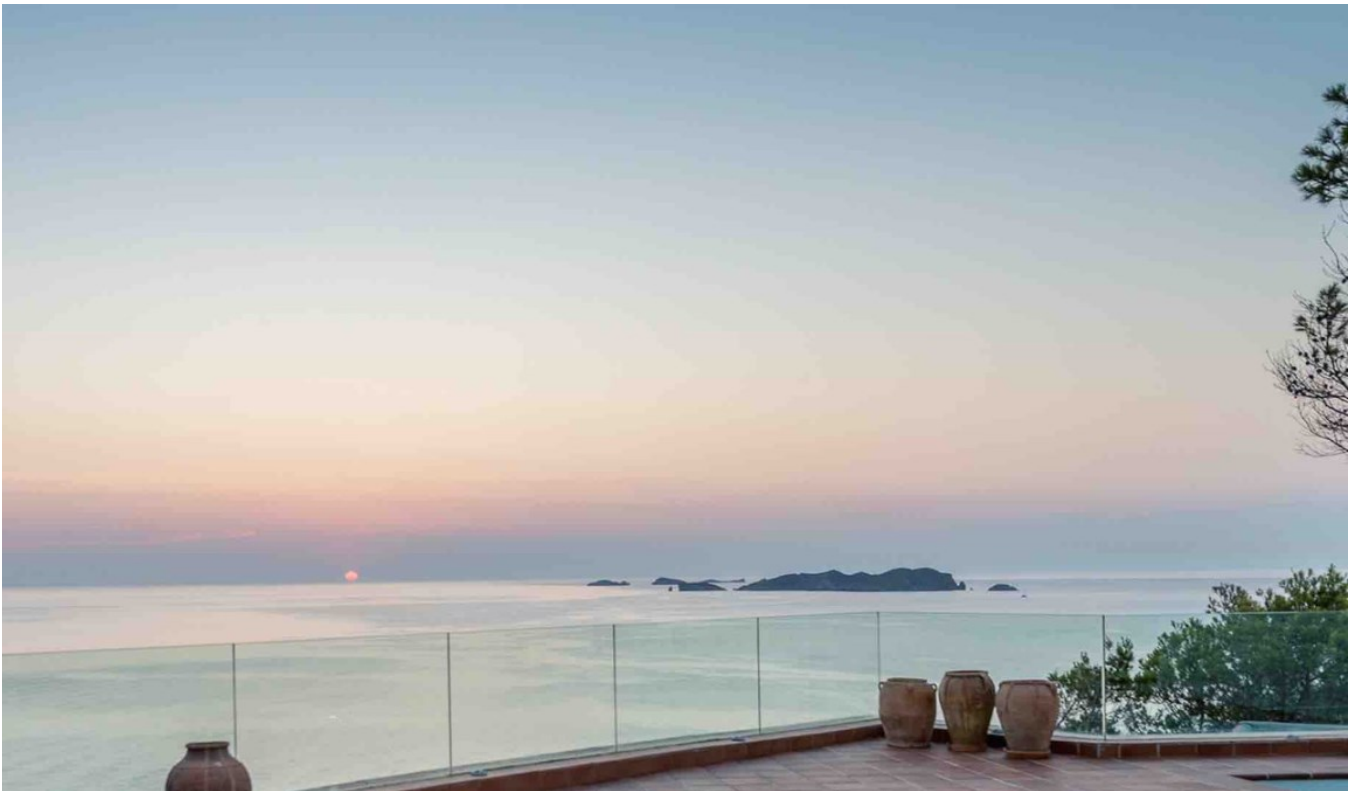
The plot of this property amounts to 1,500 m², the constructed area of 400m² is distributed over 2 floors and a guest house with a total of 5 bedrooms, 4 bathrooms, 1 spacious living and dining area with open kitchen

And several partially covered terraces.

The guest house has a bedroom, a kitchen and a salon.















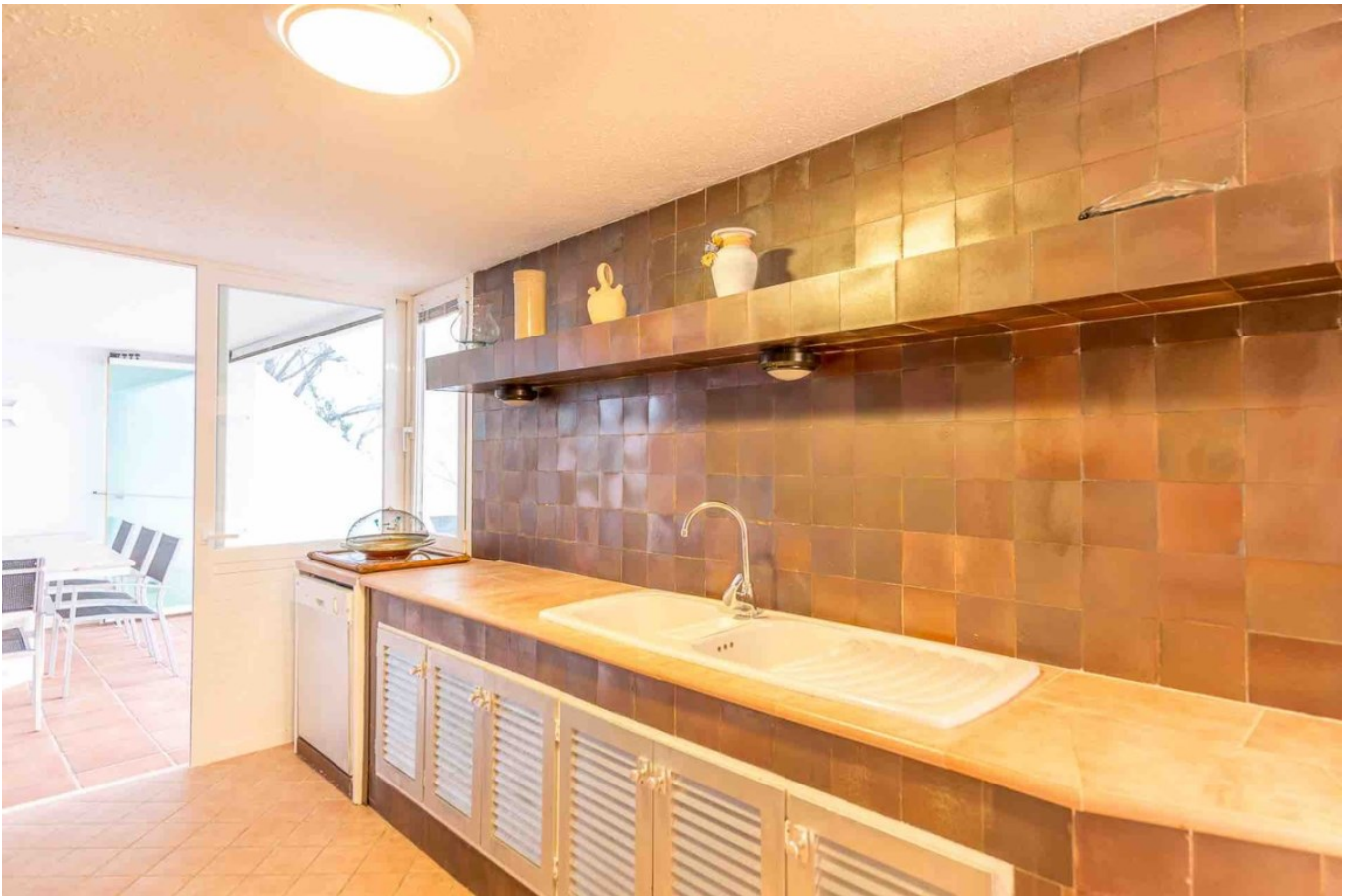


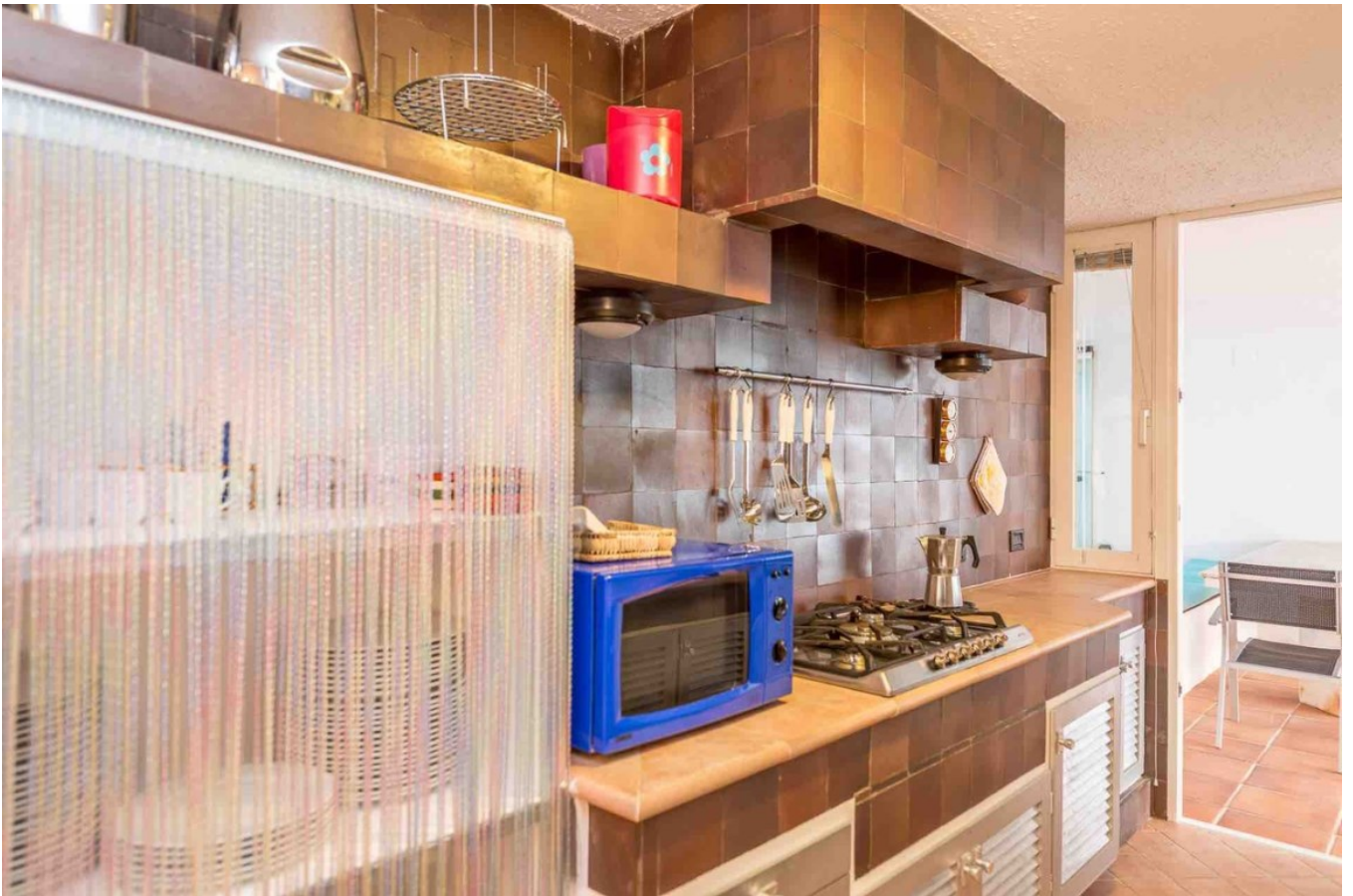












































Ctra, Jesus 101, Edif Centro, Planta Baja, Local 5,
07819 Jesus, Ibiza, Spain

Phone: +34 604 190 540 / 871 030 774
E-Mail: info@cw-ibiza.de
Website: www.cw-ibiza.de
