

Land with project of 12 apartments of 60 m2 each with a total of 703 m2 frontline



Price: 1.270.000 €

GENERAL INFORMATION

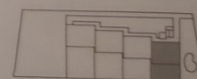
Category:	Land, Hotel	Area:	San Antonio De Portmany
Location:	San Antonio	N. Bathroom:	36
N. Bedroom:	36	M ² Inside:	703m ²
M ² Property:	1100		

DESCRIPTION

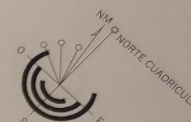
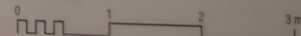
Land with project of 12 apartments of 60 m2 each with a total of 703 m2 built at 60 m from the sea, the project is submitted to the town hall and is awaiting approval. The project is of 12 apartments with parking and communal pool and is divided into 4 blocks of first floor, 1st floor and 2nd floor, it is a very exclusive property.

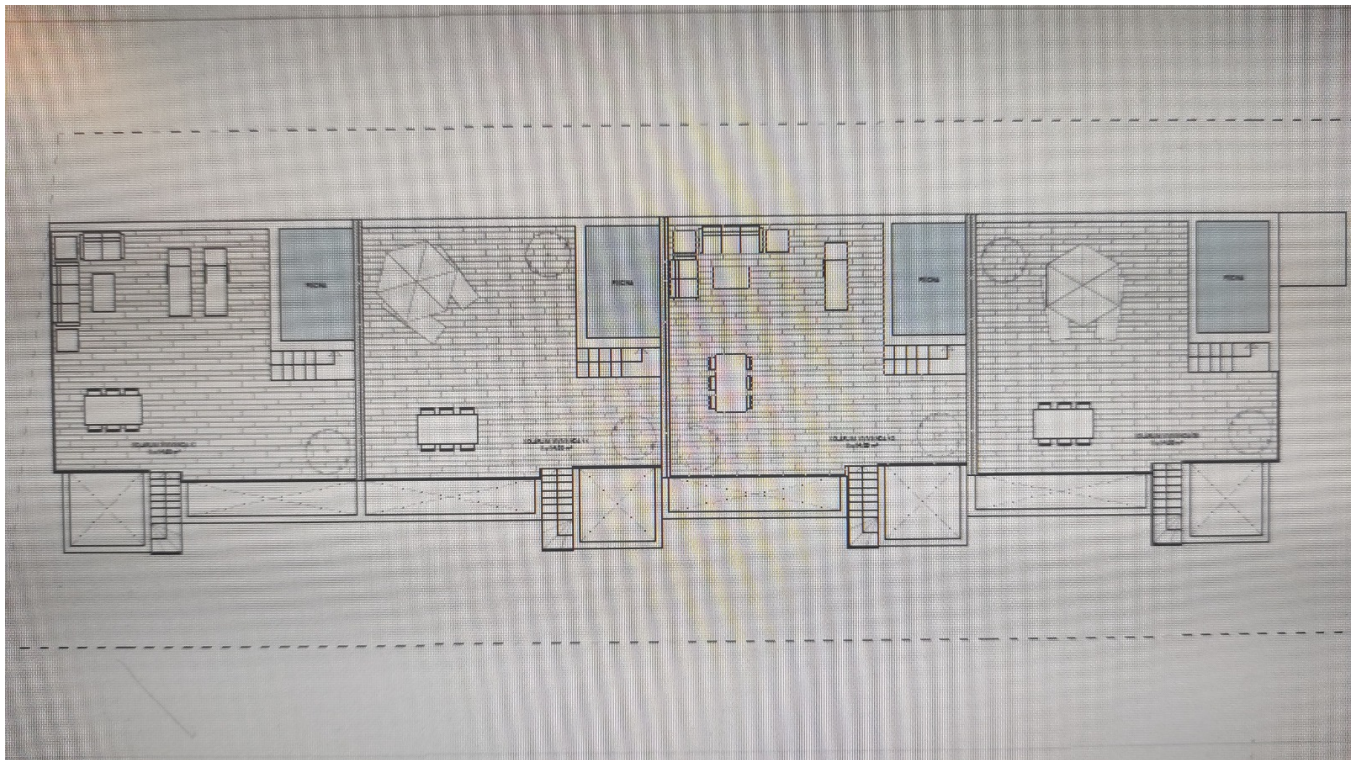
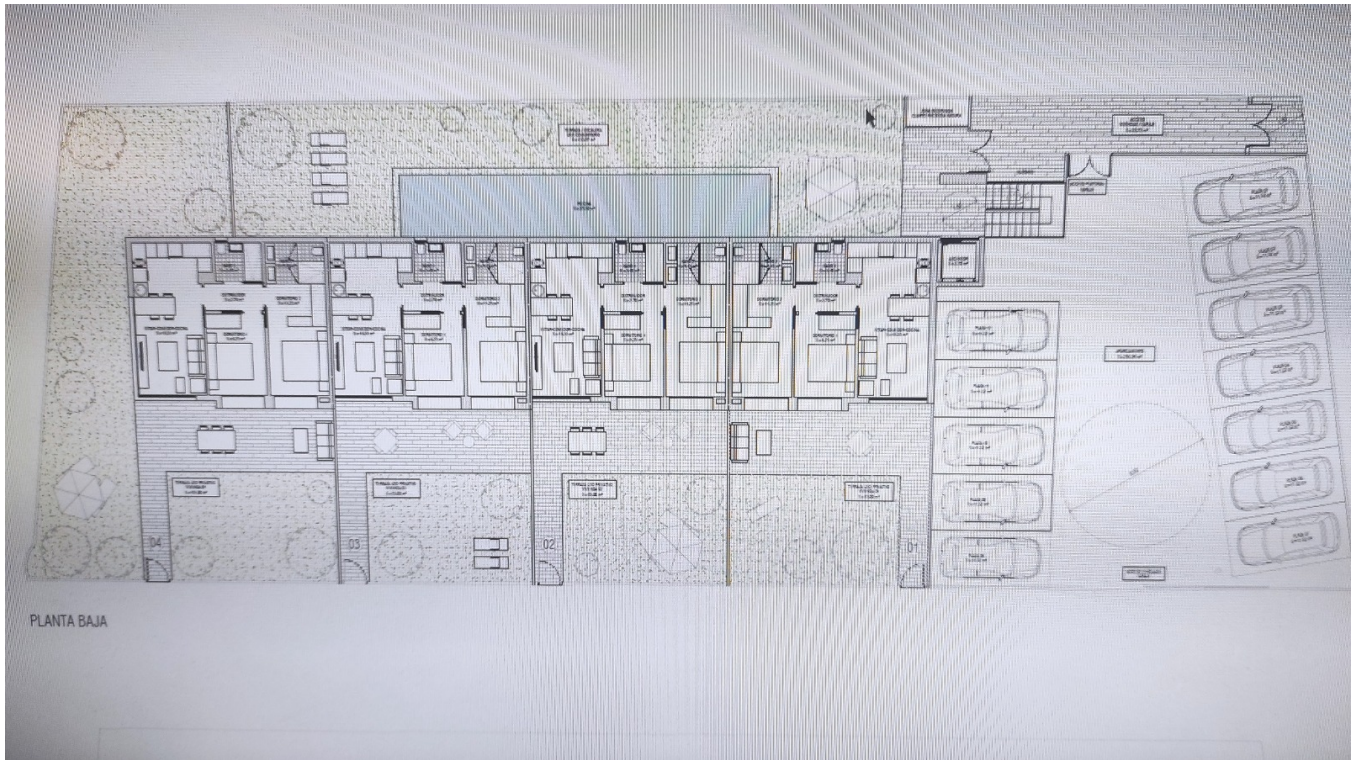


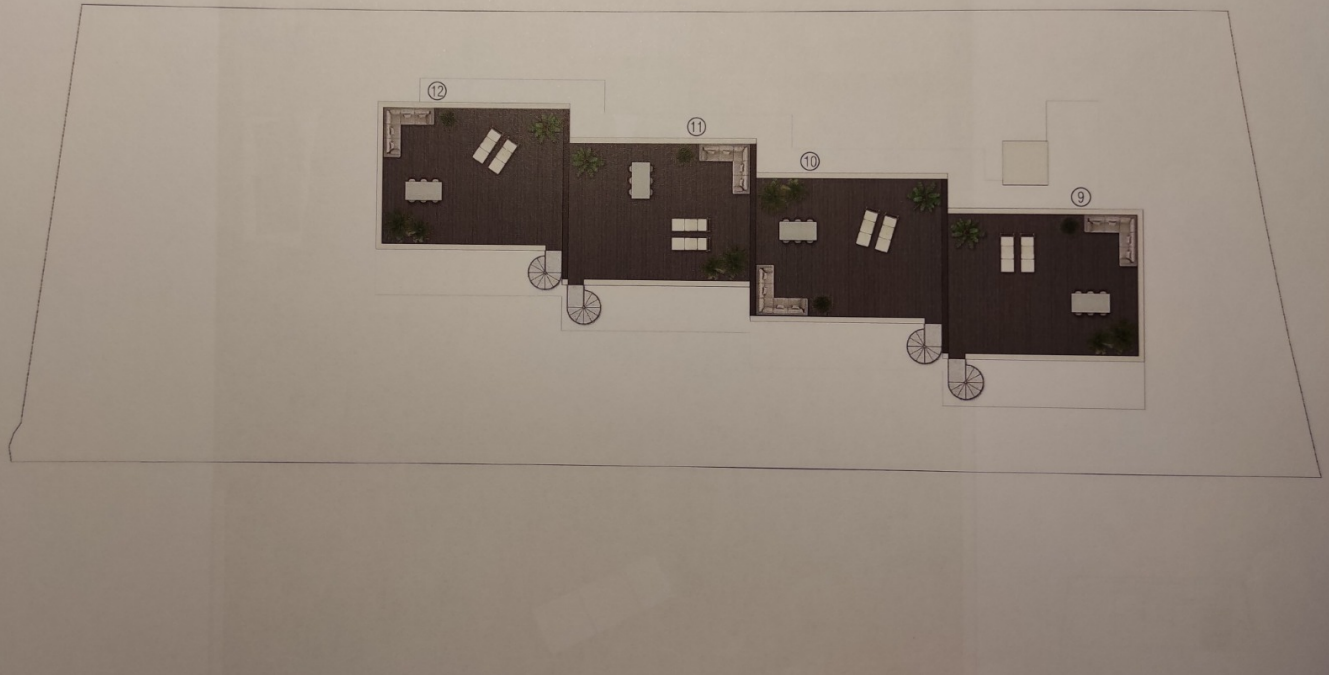
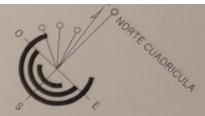




ESCALA GRÁFICA







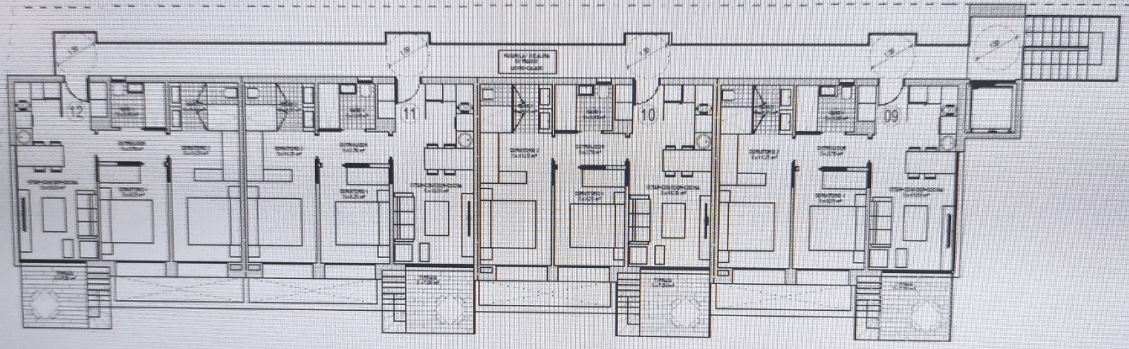
EDIFICABILIDAD		
P. BAJA	Edificación (100%)	229,80 m ²
	Cuerpos voladizos semicerrados (50%)	21,25/2 = 10,63 m ²
	TOTAL PLANTA BAJA	240,43 m ²
P. PRIMERA	Edificación (100%)	229,80 m ²
	Cuerpos voladizos semicerrados (50%)	7,08/2 = 3,54 m ²
	TOTAL PLANTA PRIMERA	233,34 m ²
P. SEGUNDA	Edificación (100%)	333,20 m ²
	TOTAL PLANTA SEGUNDA	229,60 m ²
TOTAL EDIFICABILIDAD		703,57 m ²
NORMATIVA 1.100,80 x 0.7 m ² /m ²		777,56 m ²



ESCALA GRÁFICA

0 1 2 3 4 5

10 m



PLANTA SEGUNDA

